

AMERICAN SAFETY

TECHNOLOGIES

The Leader in Anti-slip Coatings



INDUSTRIAL



COMMERCIAL



HOSPITALITY



RESIDENTIAL



MEDICAL



MUNICIPAL

Safeguard Your Workplace

*USES: Steps ■ Ramps ■ Loading Docks ■ Platforms
■ Splash/Spill Areas ■ Chemical Transfer Areas & More*

*Designed for a wide-range of applications,
available in multiple colors and profile,
AST has your project covered.*



AS-75



AS-150



AS-175*



AS-250



AS-2500

**distributor tinted color*

TOUGH ENOUGH FOR EVERYTHING FROM

PUT TRIED AND TESTED TOUGHNESS TO WORK FOR YOU.

American Safety Technologies (AST) Anti-Slip Coatings are known for incredible toughness and durability.



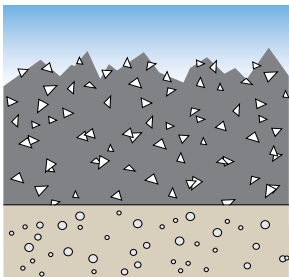
AST Anti-Slip Coatings have proven exceptionally durable in the most demanding environments imaginable – from waterparks to waterlogged pulp mills; from blast-furnace hot steel mills to Antarctic-cold storage lockers; from caustic chemical

plants to clean schools; from the dark, dank holds of ocean-going tankers to vibrant modern condos and state-of-the-art medical facilities.

AST's proven toughness can handle the most punishing traffic and the harshest chemicals that industry can dish out. AST Anti-Slip Coatings also exceed strict OSHA, ADA, USDA, ASTM and U.S. Military specifications.

EXTRAORDINARY PERFORMANCE FOR THE PRICE OF ORDINARY PAINT.

AST's proprietary formulas incorporate high tech materials second only to diamonds in hardness and are



engineered to provide a unique profile of peaks and valleys when rolled onto a surface. Liquids and other contaminants flow into the valleys leaving the high-traction peaks exposed. If the peaks ever begin to wear away, they expose fresh

grit, providing excellent slip-resistance for years. How much does all of this extraordinary performance and durability cost? Starting at around \$1 / sq. ft.*, AST Anti-Slip Coatings are comparable to ordinary industrial floor paints.

FLIGHT DECKS TO FACTORY FLOORS



5X MORE DURABILITY.

5X FEWER HEADACHES.

Constantly replacing conventional anti-slip coatings can be a real headache. That's why AST Anti-Slip Coatings are engineered to last up to five times longer than sand-in-paint and other anti-slip treatments. Five times more durability means five times fewer applications; five times less downtime; five times fewer budget problems; and five times fewer scheduling headaches. With AST, you may even spend five times fewer late nights, weekends, and holidays at work applying anti-slip coatings.

SPECIAL SOLUTIONS FOR SPECIAL PROBLEMS.



AST has the solution to slippery problems, no matter where they exist. As the leading technologist in the industry, we work directly with many of our customers to meet their unique needs. Our highly specialized products range from heavy-duty, Kevlar®-based, two-component, zero-VOC formulations (engineered for maximum impact and chemical resistance) to easy-to-use, single-component, pedestrian traffic formulations that you can apply straight out of the can.



WHICH ANTI-SLIP PRODUCT IS RIGHT



AS-75

This single-component, low-VOC, elastomeric acrylic polymer is specially formulated for pedestrian traffic and is uniquely compatible with asphalt. It yields a sealed and weather-resistant anti-slip surface and can be applied over damp areas. Clean-up is fast and easy, since it's water-based. Use it on asphalt, primed steel, concrete or wood—walkways, ramps, platforms—anywhere you need a durable, anti-slip surface.



AS-150

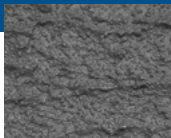
Because of its single-component formulation you can use this Kevlar®-fortified epoxy straight out of the can as needed and then re-seal for future use. Withstands heavy pedestrian and light rolling traffic, gasoline, fire, oil, salt water, acid, alkali and aliphatic solvents—and is great for floors, ramps, decks, entrances, treads, machine shops and manufacturing facilities.



AS-175*

This two-component, VOC compliant, waterborne epoxy with moderate grit is self-sealing and formulated for wet areas. It's easy to clean and chemical-resistant—perfect for barefoot and recreational traffic areas such as pools, locker rooms, showers, pleasure boats, docks, laundries, walkways and decks. Its high rate of coverage makes it an economical choice.

**distributor tinted color*



AS-250

This heavy-duty, two-component epoxy with Kevlar® is formulated for maximum durability under heavy vehicular traffic. It's resistant to fire, acid, alkali, solvent, grease, oil, salt water, detergent, alcohol, gasoline, hydraulic fluid, and weather. This makes it ideal for ramps, walkways, forklift traffic, loading docks, ships, stadiums, garages and wherever you need an extremely tough and tenacious anti-skid surface.



AS-2500

This extra heavy-duty, chemically-resistant, two component, 100%-solids, zero-VOC, low-odor epoxy reinforced with Kevlar® has incredible strength. Its zero-VOC formula makes it perfect for indoor use in food processing and preparation areas, meat packing and poultry operations, breweries, wineries, bakeries, bottling plants and hospitals or any confined, low ventilation or spark-sensitive area. Available in: gray, black and safety yellow.



AS-2500 LTC

This extra heavy-duty, chemically-resistant, two component, 100%-solids, zero-VOC, low-odor epoxy reinforced with Kevlar® has incredible strength. Its zero-VOC formula makes it perfect for indoor use in food processing and preparation areas, meat packing and poultry operations, breweries, wineries, bakeries, bottling plants and hospitals or any confined, low ventilation or spark-sensitive area.

FOR YOU?

THE RIGHT PREP FOR THE RIGHT COATING.

Formulated to complement our many different coatings, each product enhances a specific application. Call our technical support line or visit our website for the product or application technique that is right for you.



PolySpec® 100EX

A penetrating epoxy primer used to prime concrete, Steel and wood surfaces for high performance applications, 100% solids, moisture tolerant VOC compliant.



MS-7CZ

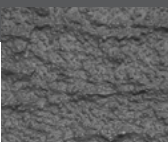
This metal primer is a two-part, epoxy-polyamide primer is required prior to application of our anti-slip coatings over metal. It provides maximum adhesion, toughness and corrosion resistance, withstanding even salt and chemical attack.



MS-11CZ

MS-11CZ Surface Primer is a low temperature curing, VOC compliant, heavy duty, anti-corrosive modified epoxy primer which forms a tough abrasion resistant film that protects the substrate from salt and chemical attack. Ideal for use on metal when low temperatures are expected.

APPLICATION PROFILES



STANDARD TEXTURE

Poured right from the can after mixing, the standard texture is created from back rolling the application area with a phenolic roller, Excellent when maximum grip is needed, installation is as easy as 1, 2, 3.



SMOOTH TEXTURE

If your project demands a non-skid, but you need a smoother texture, we have you covered. By pouring the mixed product onto the application area and back rolling with a standard 3/8" nap roller, you can provide a more even anti-slip surface while enjoying the durability of our AST products. Best for use on AS-150 and AS-250.



TROWEL TEXTURE

Another option for achieving a smooth texture finish is to trowel on the anti-skid material. As all of the AST products can be troweled instead of rolled, the trowel method is the preferred choice when needing a smooth finish on AS-2500/AS-2500 LTC.

APPLICATION AS EASY AS 1, 2, 3.



AST Coatings are just as easy to apply as paint. Simply roll onto a clean, dry, uncontaminated floor. Most of our coatings are ready for light traffic in 12-24 hours, heavy traffic in just 48 hours. AST Anti-Slip Coatings are easy to clean, too. They meet the ASTM D-3450 test for washability and easy clean-up. Just sweep, hose off, or run a scrubbing machine over the surface with the cleaning solution of your choice.

IT'S THIS SIMPLE: First, clean the floor of grease and oil, and patch or prime if necessary. Then mix the contents of the can(s) thoroughly. Apply with our special phenolic roller, a 3/8" nap roller or trowel — which builds the correct anti-slip profile as you pull it across the surface. Let it dry. You're done!

DIFFERENT TOOLS FOR DIFFERENT PROFILES

PHENOLIC ROLLER
Standard Profile



NAP ROLLER
Smooth Texture



TROWEL
Trowel Texture



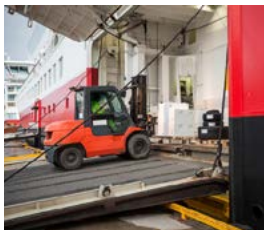
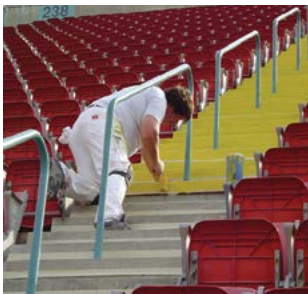
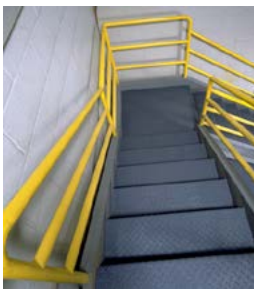
A Variety of Tint Bases are Available for AS-75, AS-150HF and AS-175

TECHNICAL INFORMATION

	AS-75	AS-150 HF	AS-175	AS-250	AS-2500	AS-2500 LTC
EST. COVERAGE IN SQ. FT./GAL						
Roller	70	40	90	40	25-35	25-35
Trowel		50		50	40	40
Spray	125	60	120	60	60	60
EST. POT LIFE IN HOURS						
@70°F (21°C)	NA	NA	1	4	1	45
MEETS OSHA, ADA, ASTM, & MILITARY SPECIFICATIONS						
Y=Yes	Y	Y	Y	Y		
EST. DRY TIME IN HOURS@70°F (21°C)						
Light Traffic	3-4	12	24	12	24	16
Heavy Traffic	24	72	72	72	72	24
VOC VOLUMES						
Pounds/Gallon	.34	.82	.5	2.0	0	0
Grams/Liter	42	98	60	250	0	0
% Solids	68	61	63	71	100	100
COEFFICIENT OF FRICTION (ADA MIN. = 0.6)						
Dry	1.3	1.17	.78	1.05	1.1	1.1
Wet	.9	1.0	.86	1.05	1.0	1.0
AVAILABLE COLORS						
Gray	●	●		●	●	●
Light Gray		●				
Black	●	●		●	●	●
Safety Yellow		●			●	●
Tint Base	●	●	●			

Contact us for solution or application support at:
holcimacs.info@holcim.com
1-800-878-7876

THE RIGHT ANTI-SLIP SOLUTIONS?



PROVE IT WITH A TEST PATCH.

Call today and we will put you in touch with your local AST distributor. Your coatings professional can provide an expert analysis, help you place an order, or answer any questions you may have.

**Prices and specifications subject to change. Kevlar is a registered trademark of DowDuPont.*

HOLCIM SOLUTIONS AND PRODUCTS US, LLC.

Tel: 1-800-878-7876 | Fax +1 972-554-3939
holcimacs.info@holcim.com | www.holcimast.com